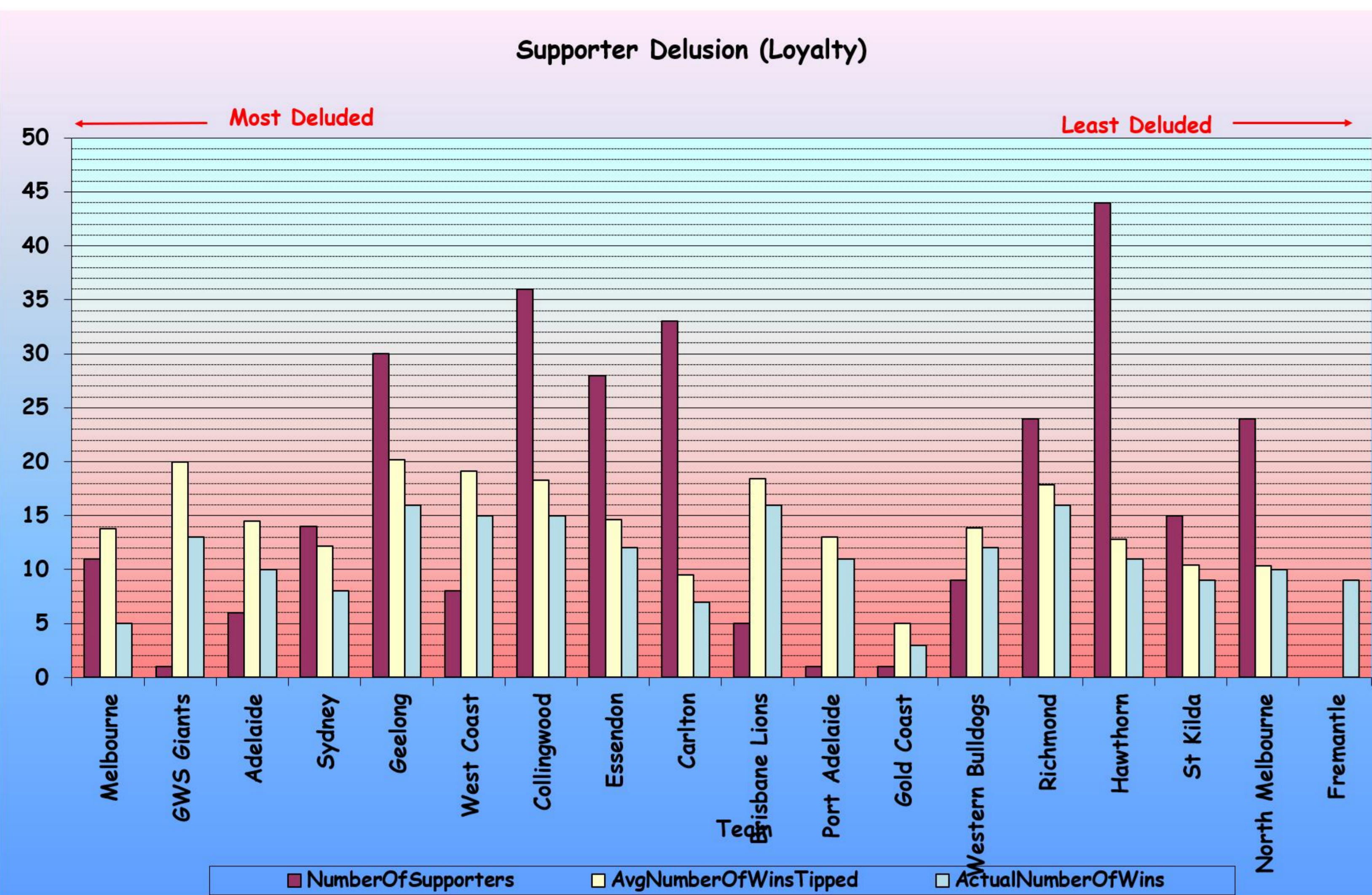




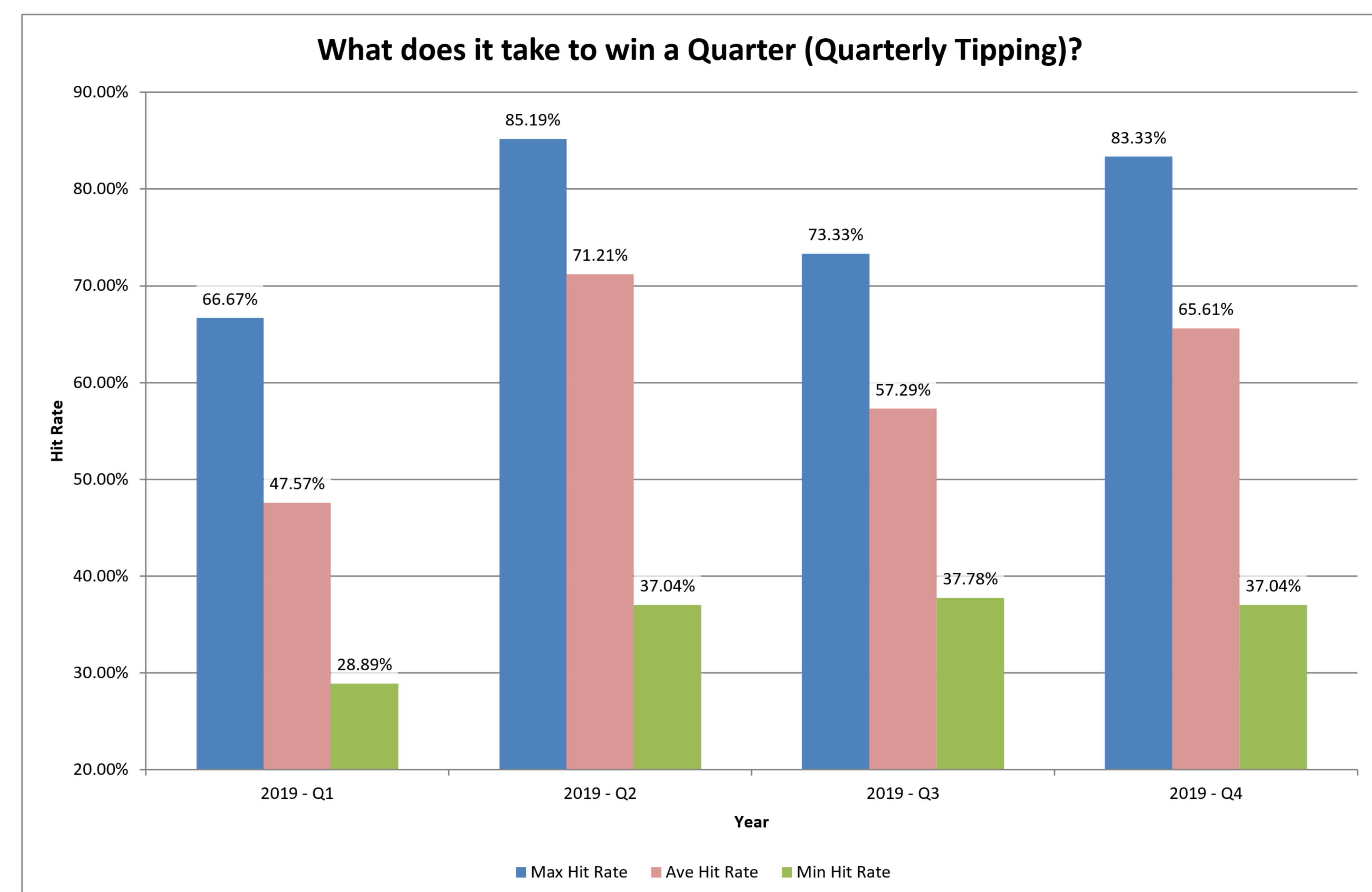
HAT Footy Tipping's 2019 MEGA WALL

(Mega Wall idea stolen from Channel 7!)



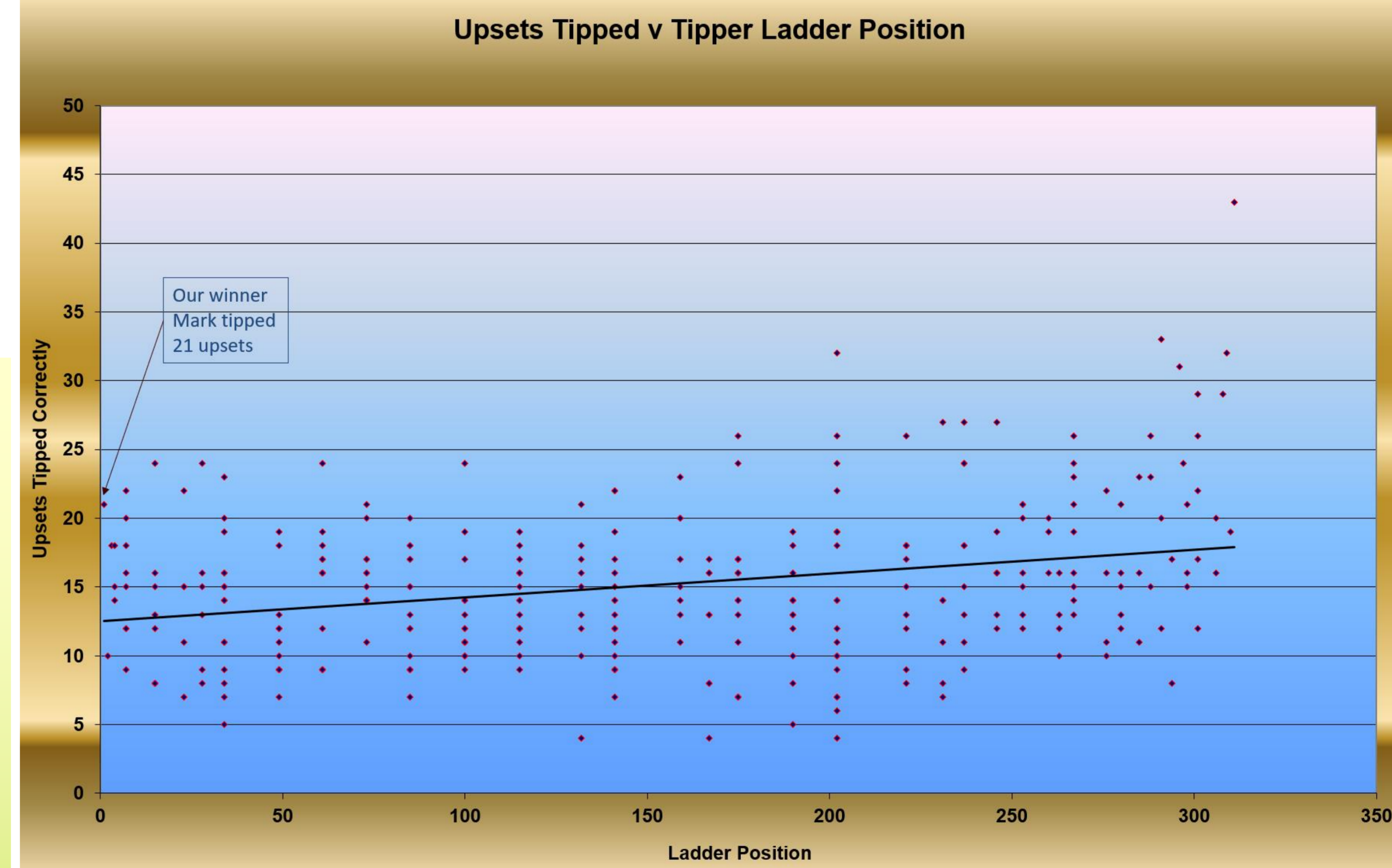
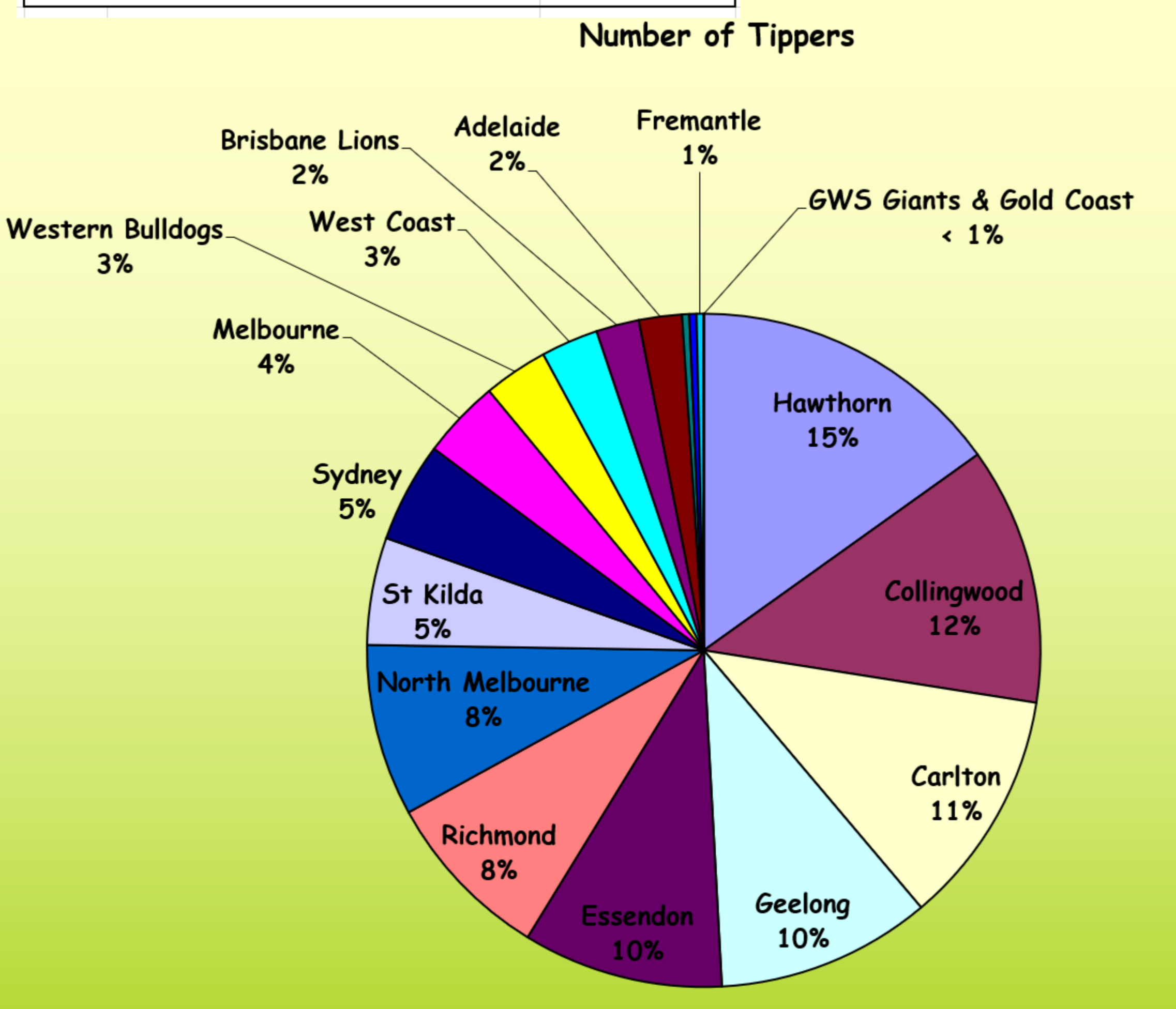
Weekly Winners

Round	Winner	Amount
1	Michael Verrier (7/9) 180 points. (Actual 161)	\$ 50
2	Daniel Tucker (7/9) 180 points. (Actual 161)	\$ 50
3	Mark Drew (7/9) 178 points. (Actual 176)	\$ 50
4	Greg Breward (8/9) 175 points. (Actual 174)	\$ 50
5	Lee Beaumont (7/9) 181 points. (Actual 178)	\$ 50
6	Geoff Cowle (7/9) 186 points. (Actual 184)	\$ 50
7	Shannon Hill (9/9) 127 points. (Actual 127)	\$ 80
8	Jeremy Hill (8/9) 177 points. (Actual 177)	\$ 50
9	Reinhold Krueger (9/9) 171 points. (Actual 149)	\$ 50
10	Kaye Martindill (9/9) 152 points. (Actual 154)	\$ 50
11	Darryl Munro (9/9) 166 points. (Actual 153)	\$ 50
12	Jessey Dillon (8/9) 169 points. (Actual 161)	\$ 50
13	Cheryl Whelan (9/9) 100 points. (Actual 141)	\$ 100
14	Scott Hannaford (6/6) 169 points. (Actual 169)	\$ 80
15	Gary O'Donovan (6/6) 175 points. (Actual 177)	\$ 60
16	Brett Templar (7/9) 166 points. (Actual 148)	\$ 40
17	Bryce Turnbull (8/9) 169 points. (Actual 171)	\$ 20
18	Peter Sandars (9/9) 162 points. (Actual 164)	\$ 100
19	Brian Fleming (8/9) 100 points. (Actual 130)	\$ 60
20	Janno Bellette (8/9) 142 points. (Actual 155)	\$ 40
21	Michele Percey (8/9) 142 points. (Actual 155)	\$ 20
22	Mark Spooner (8/9) 120 points. (Actual 114)	\$ 100
23	Laura Jacques (9/9) 120 points. (Actual 114)	\$ 60
24	Brian Whelan (9/9) 129 points. (Actual 129)	\$ 40
25	Prudence Salter (9/9) 145 points. (Actual 141)	\$ 40
26	Craig Steele (9/9) 145 points. (Actual 141)	\$ 20
27	Chris Harper (8/9) 169 points. (Actual 171)	\$ 50
28	Trevor Duggan (9/9) 162 points. (Actual 164)	\$ 50
29	Mark Bresnahan (8/9) 152 points. (Actual 150)	\$ 50
30	Warren Clarke (9/9) 120 points. (Actual 114)	\$ 50
31	Winner Round 22: Maria Skillern (9/9) 129 points. (Actual 129)	\$ 50
32	Tony Shea (9/9) 145 points. (Actual 141)	\$ 50
33	Andrew Johnson (8/9) 100 points. (Actual 141)	\$ 100
34	Django Still (9/9) 100 points. (Actual 141)	\$ 80
35	Maria Skillern (8/9) 100 points. (Actual 141)	\$ 60
36	Chris Harper (8/9) 100 points. (Actual 141)	\$ 40
37	Cyril Patmore (8/9) 100 points. (Actual 141)	\$ 20
38	Anne Bassett (8/9) 100 points. (Actual 141)	\$ 100
39	Cheryl Whelan (8/9) 100 points. (Actual 141)	\$ 60
40	Josh White (8/9) 100 points. (Actual 141)	\$ 40
41	Mark Drew (8/9) 100 points. (Actual 141)	\$ 100
42	Kevin Bresnahan (8/9) 100 points. (Actual 141)	\$ 60
43	Alex Wolfert (8/9) 100 points. (Actual 141)	\$ 40
44	Ned Clarke (8/9) 100 points. (Actual 141)	\$ 100
45	Marcus Orr (8/9) 100 points. (Actual 141)	\$ 60
46	Kevin Bresnahan (8/9) 100 points. (Actual 141)	\$ 40
47	Craig Owens (8/9) 100 points. (Actual 141)	\$ 50
Total Prize Money Paid Out		\$ 3,280



This version of the ladder gives more points for beating sides higher on the ladder and less for beating those lower down. Six points are awarded for beating the top side, and two for beating the bottom side.

	TeamName	For	Against	Wins	Draws	Losses	Adjusted Points	RealPoints	RealLadderPos
1	Brisbane Lions	2,004	1,694	16	-	6	58.8	64	2
2	Geelong	1,984	1,462	16	-	6	58.1	64	1
3	Richmond	1,892	1,664	16	-	6	57.4	64	3
4	Collingwood	1,885	1,601	15	-	7	56.4	60	4
5	West Coast	1,902	1,691	15	-	7	52.1	60	5
6	Western Bulldogs	1,941	1,810	12	-	10	48.7	48	7
7	GWS Giants	1,926	1,669	13	-	9	45.5	52	6
8	Hawthorn	1,742	1,602	11	-	11	44.6	44	9
9	Essendon	1,702	1,784	12	-	10	40.9	48	8
10	Fremantle	1,561	1,712	9	-	13	39.4	36	13
11	Port Adelaide	1,800	1,696	11	-	11	38.0	44	10
12	North Melbourne	1,824	1,834	10	-	12	36.7	40	12
13	Adelaide	1,776	1,761	10	-	12	32.2	40	11
14	St Kilda	1,645	1,961	9	-	13	27.2	36	14
15	Sydney	1,706	1,746	8	-	14	26.6	32	15
16	Carlton	1,609	1,905	7	-	15	24.8	28	16
17	Melbourne	1,569	1,995	5	-	17	14.5	20	17
18	Gold Coast	1,351	2,232	3	-	19	10.2	12	18



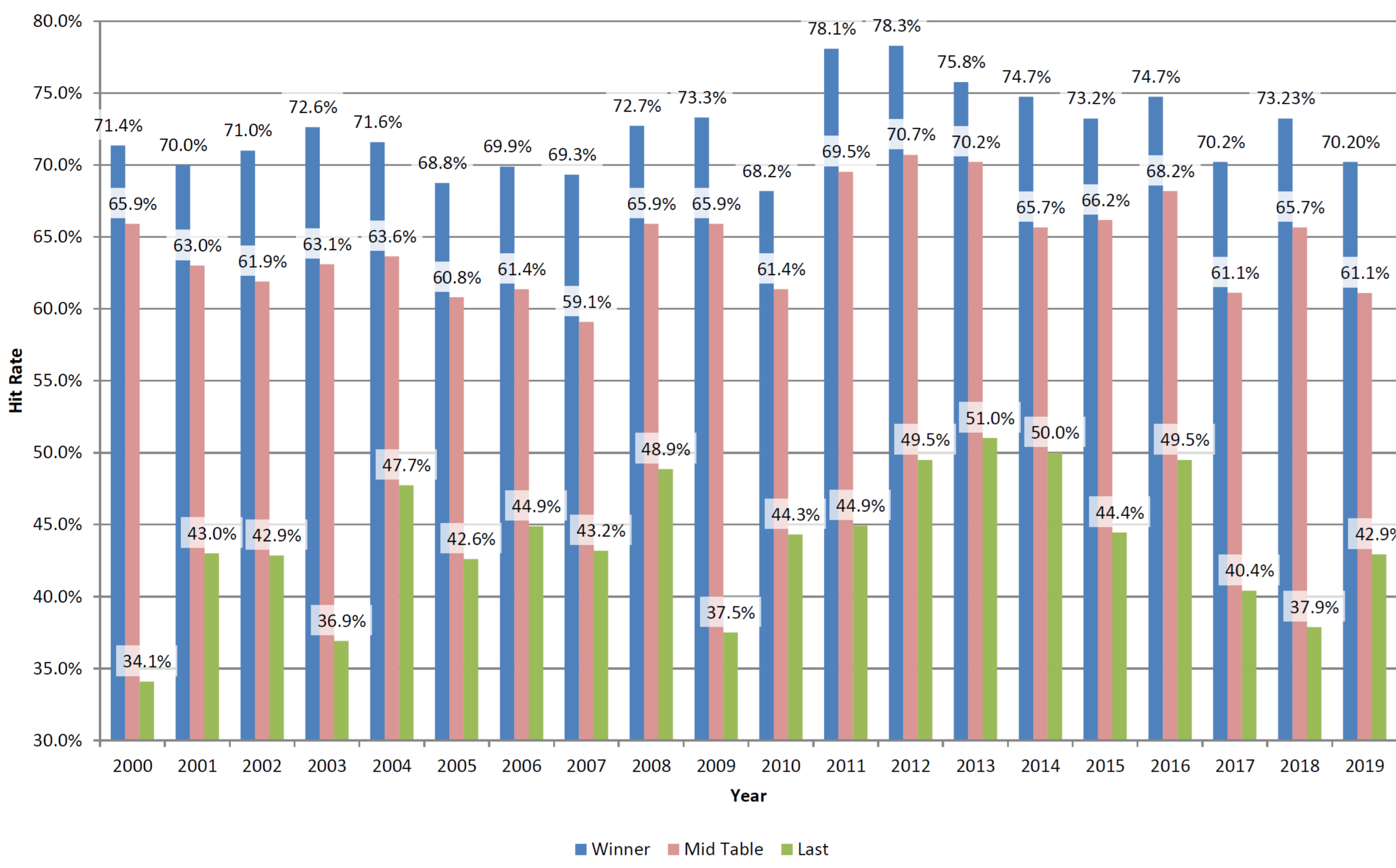


HAT Footy Tipping's 2019 MEGA WALL

(Mega Wall idea stolen from Channel 7!)



What does it take to win HAT Footy Tipping?



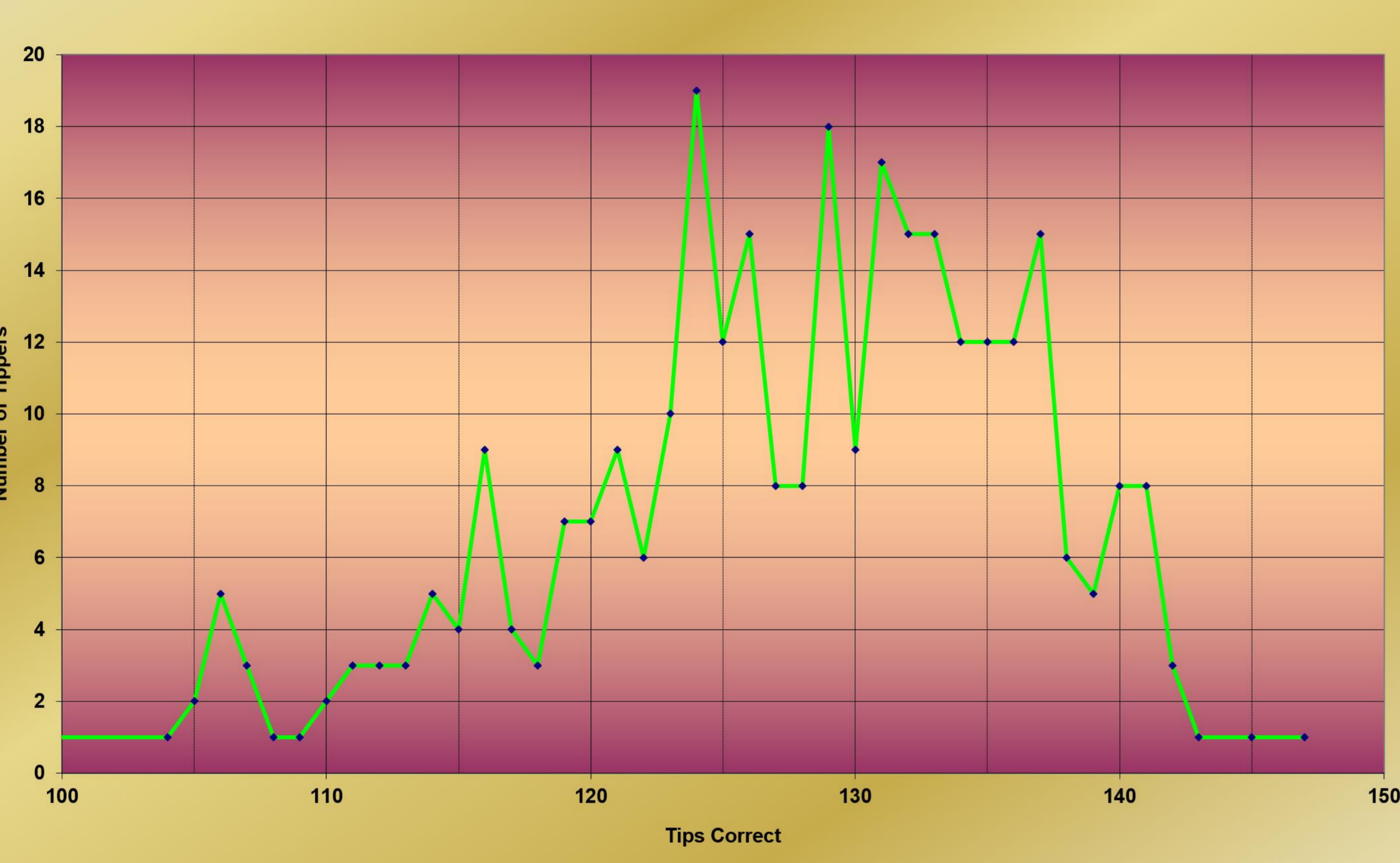
Leaders Round by Round

RoundNum	FirstName	Surname	Final Position
1	Adele	McTye	132
1	Chris	Hughes	115
2	Adele	McTye	132
3	Dom	James	253
4	Dom	James	253
5	Dom	James	253
6	Nathan	Jacques	7
7	Nathan	Jacques	7
8	Nathan	Jacques	7
9	Nathan	Jacques	7
10	Nathan	Jacques	7
11	Nathan	Jacques	7
12	Nathan	Jacques	7
13	Nathan	Jacques	7
14	Nathan	Jacques	7
15	Nathan	Jacques	7
16	Nathan	Jacques	7
17	Nathan	Jacques	7
17	Shaun	Heather	7
18	Nathan	Jacques	7
19	John	Canavan	15
20	Glenn	Wheeler	2
20	John	Canavan	15
21	Mark	Drew	1
22	Mark	Drew	1
23	Mark	Drew	1

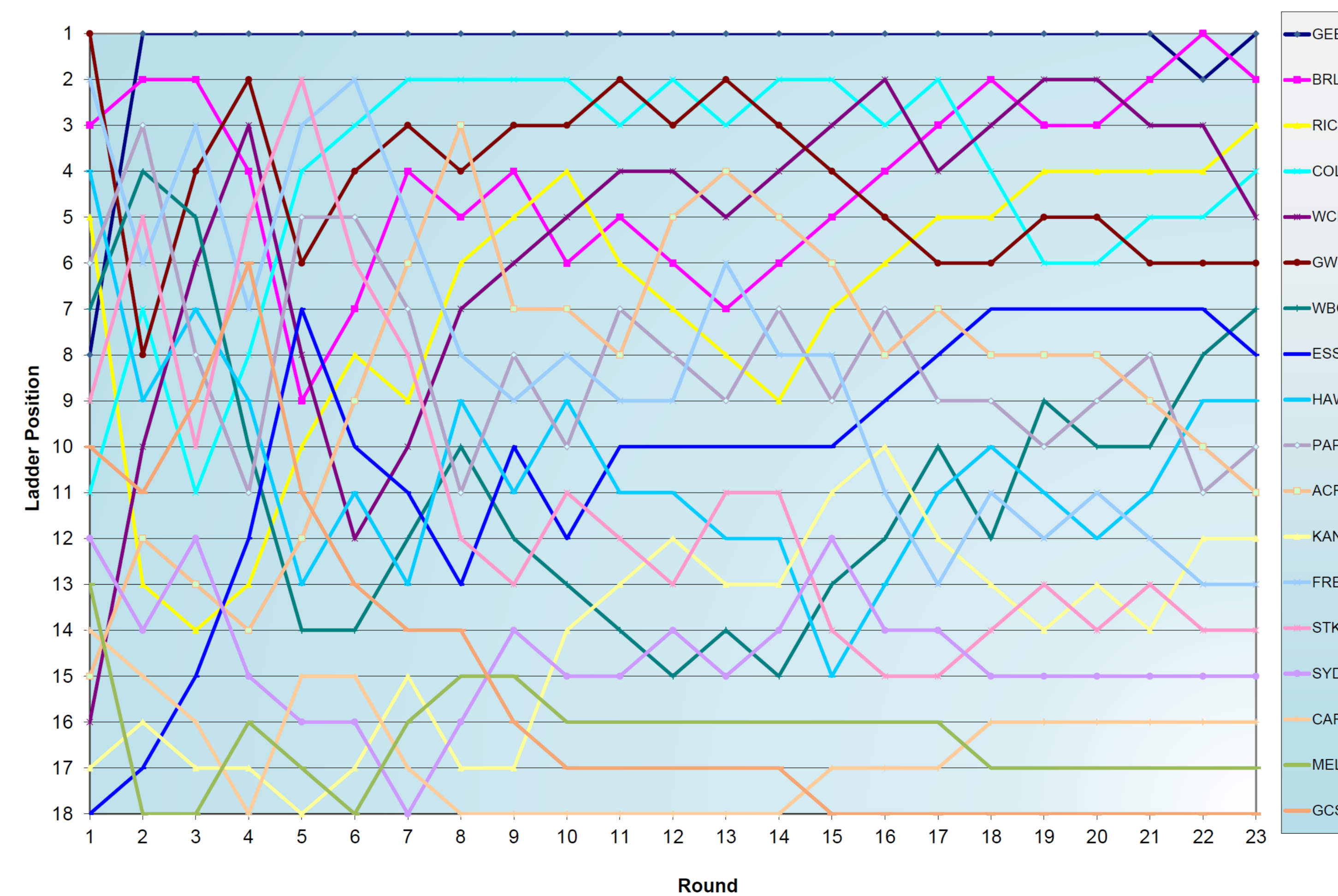
Ladder Predictions

Best Ladder		Final AFL Ladder 2019				Average Ladder All Tippers				Worst Ladder		
Craig Owens (North Family and Friends, Collingwood)		Final AFL Ladder 2019				Average Ladder All Tippers				Catherine Owens (North, Family and Friends, Hawthorn)		
Team	Actual Ladder Position	TeamName	Points	%	TeamName	Average LadderPos	Actual Ladder Position	Min Ladder Tip	Max Ladder Tip	TeamID	Actual Ladder Position	
Richmond	3	Geelong	1	64	135.7%	Richmond	1.98	3	1	18	GWS Giants	6
GWS Giants	6	Brisbane Lions	2	64	118.3%	West Coast	2.94	5	1	17	Richmond	3
Collingwood	4	Richmond	3	64	113.7%	Collingwood	3.69	4	1	15	Sydney	15
Melbourne	17	Collingwood	4	60	117.7%	Melbourne	4.65	17	1	17	West Coast	5
West Coast	5	West Coast	5	60	112.5%	GWS Giants	6.86	6	1	17	Melbourne	17
Geelong	1	GWS Giants	6	52	115.4%	Geelong	7.13	1	1	18	Geelong	1
Adelaide	11	Western Bulldogs	7	48	107.2%	Adelaide	7.67	11	1	16	Carlton	16
Essendon	8	Essendon	8	48	95.4%	Essendon	8.86	8	1	18	Collingwood	4
Hawthorn	9	Hawthorn	9	44	108.7%	Hawthorn	8.33	9	1	18	Hawthorn	9
Port Adelaide	10	Port Adelaide	10	44	106.1%	Sydney	8.02	15	1	17	Fremantle	13
North Melbourne	12	Adelaide	11	40	100.9%	North Melbourne	10.56	10	2	18	Gold Coast	18
Brisbane Lions	2	North Melbourne	12	40	99.5%	Port Adelaide	10.50	10	1	17	North Melbourne	12
St Kilda	14	Fremantle	13	36	91.2%	Western Bulldogs	13.13	7	1	18	Port Adelaide	10
Western Bulldogs	7	St Kilda	14	36	83.9%	Brisbane Lions	13.81	2	1	18	Adelaide	11
Sydney	15	Sydney	15	32	97.7%	Fremantle	14.15	13	1	18	Western Bulldogs	7
Fremantle	13	Carlton	16	28	84.5%	Carlton	15.88	16	1	18	Brisbane Lions	2
Carlton	16	Melbourne	17	20	78.6%	St Kilda	15.54	14	5	18	St Kilda	14
Gold Coast	18	Gold Coast	18	12	60.5%	Gold Coast	17.30	18	3	18	Essendon	8
Positions Out:	52	Positions Out:	60	Positions Out:	100							

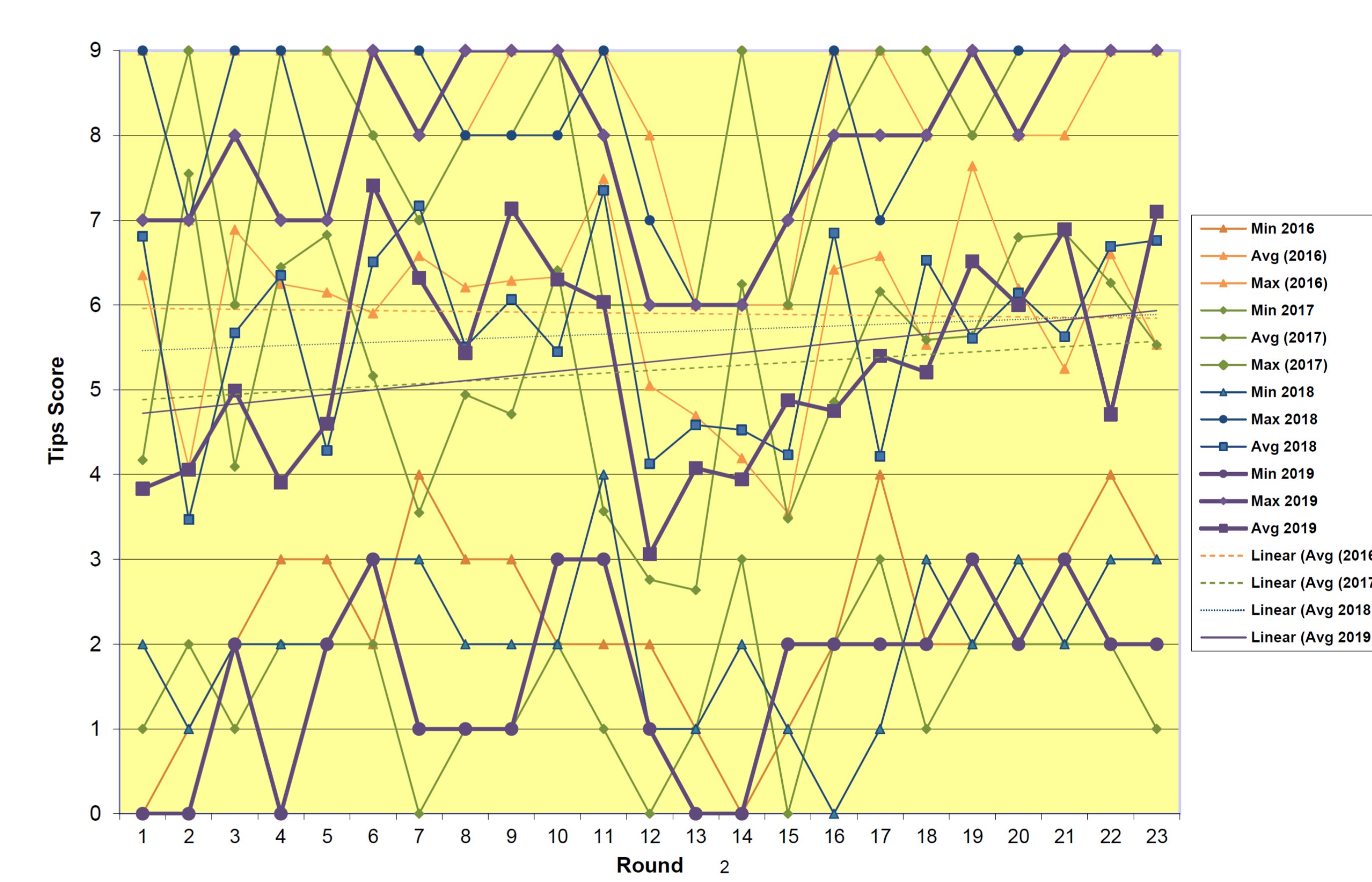
Count Of Tips Correct



2019 AFL Ladder Round by Round



HAT Footy Tipping Overall Tipping Summary - 2016 to 2019





HAT Footy Tipping's 2019 MEGA WALL

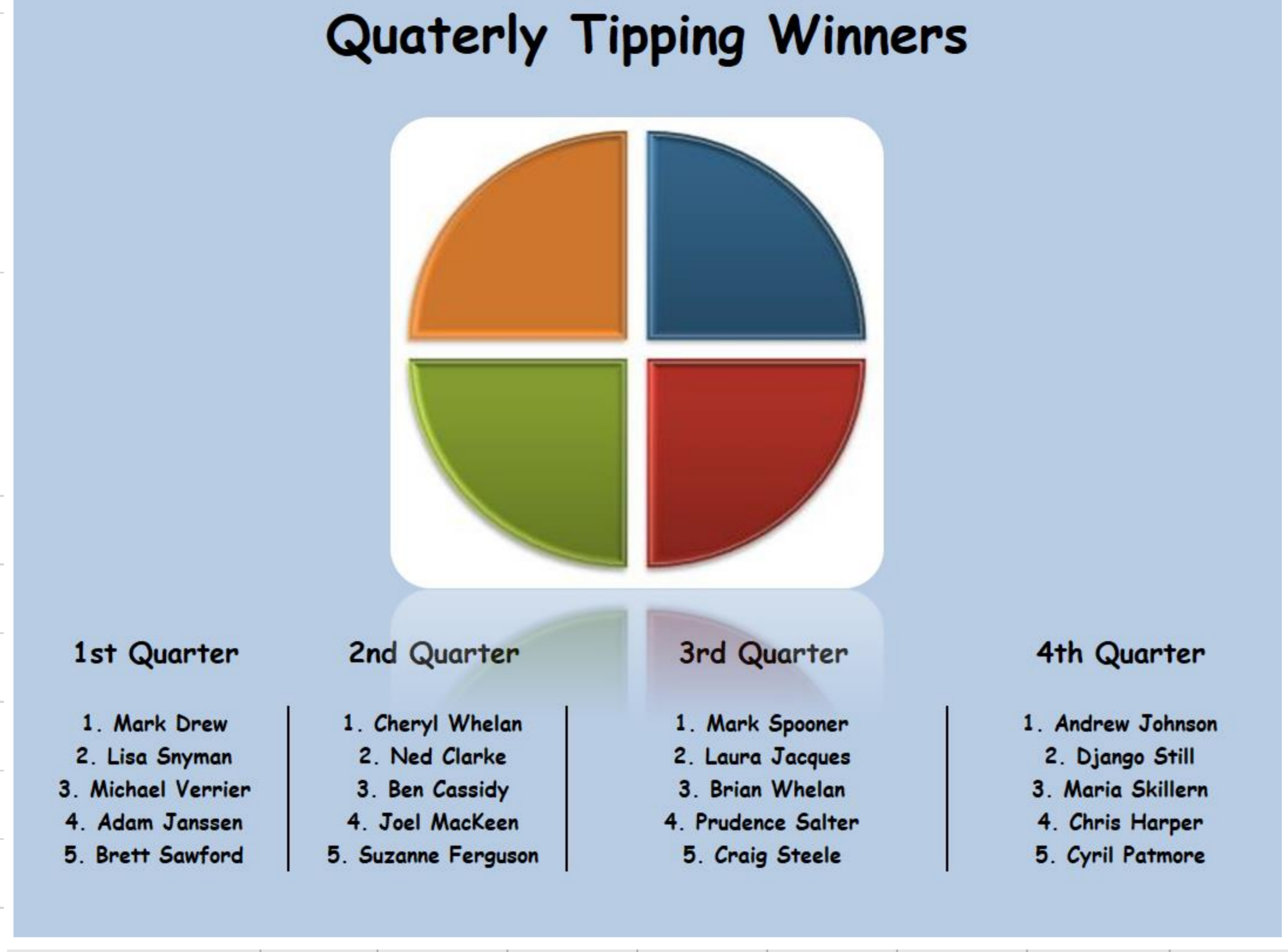
(Mega Wall idea stolen from Channel 7!)



How our winner, Mark Drew progressed through the year

Round	Ranking	Tips Correct	Total Score
1	26	5	5
2	3	7	12
3	7	5	17
4	3	7	24
5	2	6	30
6	4	8	38
7	5	8	45
8	4	6	51
9	7	8	59
10	6	7	66
11	16	6	72
12	16	3	75
13	16	5	80
14	18	4	84
15	26	4	88
16	19	6	94
17	17	6	100
18	16	6	106
19	13	7	113
20	12	7	120
21	1	16*	136
22	1	3	139
23	1	8	147

* Wildcard Used



Overall HR Teams

Team	Tipped For	Tipped For Correct	For HitRate	Tipped Against	Tipped Against Correct	Against HitRate	Matches Played	HitRate
Gold Coast	727	264	36.30%	6,315	5,608	88.80%	22	83.40%
Richmond	5,188	4,113	79.30%	1,854	858	46.30%	22	70.60%
Carlton	1,458	696	47.70%	5,584	4,042	72.40%	22	67.30%
St Kilda	2,087	1,333	63.90%	4,956	3,400	68.60%	22	67.20%
West Coast	5,612	4,014	71.50%	1,431	638	44.60%	22	66.10%
Geelong	5,788	4,228	73.00%	1,255	351	28.00%	22	65.00%
Melbourne	2,751	859	31.20%	4,292	3,541	82.50%	22	62.50%
Sydney	3,021	1,418	46.90%	4,022	2,885	71.70%	22	61.10%
Collingwood	5,437	3,727	68.50%	1,606	542	33.70%	22	60.60%
Brisbane Lions	3,852	3,053	79.30%	3,191	1,123	35.20%	22	59.30%
North Melbourne	2,451	1,367	55.80%	4,591	2,769	60.30%	22	58.70%
Essendon	3,272	2,054	62.80%	3,771	1,977	52.40%	22	57.20%
GWS Giants	5,170	3,143	60.80%	1,872	847	45.20%	22	56.70%
Adelaide	4,102	2,104	51.30%	2,940	1,835	62.40%	22	55.90%
Fremantle	2,874	1,317	45.80%	4,169	2,595	62.20%	22	55.50%
Port Adelaide	3,334	1,846	55.40%	3,709	2,040	55.00%	22	55.20%
Hawthorn	3,375	1,704	50.50%	3,668	1,862	50.80%	22	50.60%
Western Bulldogs	2,885	1,542	53.40%	4,158	1,869	44.90%	22	48.40%

Number of times Supporters backed their own team

Loyal Supporters Crosstab

TippedCount	Adelaide	Brisbane Lions	Carlton	Collingwood	Essendon	Geelong	Gold Coast	GWS Giants	Hawthorn	Melbourne	North Melbourne	Port Adelaide	Richmond	St Kilda	Sydney	West Coast	Western Bulldogs
22				7	1	13			2		1				1	4	
21			1	5		6			1	2			3		1	1	1
20	1	2		4	2	5		1	3	1			4	1	1		1
19		2		7	4	2			2	1	1		6				
18			1	3	2	2			1		1		5	1		1	
17	1		1	1	4				3		1		2				
16				2	1				2	1	1		2			1	
15			4	3	2				2	1						1	1
14	1	1	1		2				4		3			1			2
13	2		1		2	1			2			1		1	1		1
12			2	2	1				5					1			1
11			4						2	1	2			1	2	1	
10	1		2		3				3	1	1			2	3		
9			4		2				3	1	2			1	1		1
8									1	1	1		1	3			
7			1	1		1			1		4		1	1	1		1
6				1					3		1				1		
5			5				1		2		3			1	1		
4			1		2						1						
3			1								1			1			
2			3						2					1			
1				1						1							

